



**REGIONAL SPECIALISED METEOROLOGICAL CENTRE-TROPICAL CYCLONES, NEW DELHI  
SPECIAL TROPICAL WEATHER OUTLOOK**

**DEMS-RSMC TROPICAL CYCLONES NEW DELHI DATED 16.07.2025**

**SPECIAL TROPICAL WEATHER OUTLOOK FOR NORTH INDIAN OCEAN (THE BAY OF BENGAL AND THE ARABIAN SEA) VALID FOR NEXT 168 HOURS ISSUED AT 0330 UTC OF 16.07.2025 BASED ON 0000 UTC OF 16.07.2025.**

**SUB: (A) WELL MARKED LOW PRESSURE AREA OVER SOUTHWEST BIHAR AND ADJOINING EAST UTTAR PRADESH**

**(B) DEPRESSION OVER NORTHWEST RAJASTHAN WEAKENED INTO A WELL MARKED LOW PRESSURE AREA OVER THE SAME REGION**

**(A) WELL MARKED LOW PRESSURE AREA OVER SOUTHWEST BIHAR AND ADJOINING EAST UTTAR PRADESH**

THE WELL MARKED LOW PRESSURE AREA OVER SOUTH BIHAR AND ADJOINING JHARKHAND MOVED WEST-NORTHWESTWARDS AND LAY OVER SOUTHWEST BIHAR AND ADJOINING EAST UTTAR PRADESH AT 0000 UTC OF TODAY, THE 16TH JULY 2025.

IT IS LIKELY TO MOVE WEST-NORTHWESTWARDS ACROSS SOUTHWEST BIHAR AND EAST UTTAR PRADESH DURING NEXT 24 HOURS. HOWEVER, THE SYSTEM IS UNDER CONTINUOUS MONITORING FOR POSSIBLE RE-INTENSIFICATION.

AS PER INSAT 3DS IMAGERY, AT 0000 UTC OF 16<sup>TH</sup> JULY 2025 SCATTERED TO BROKEN LOW/MED CLOUDS WITH EMBEDDED INTENSE TO VERY INTENSE CONVECTION OVER SOUTH EAST UTTAR PRADESH EAST MADHYA PRADESH VIDARBHA BIHAR JHARKHAND CHHATTISGARH ODISHA GANGETIC WEST BENGAL SUB HIMALAYAN WEST BENGAL (MINIMUM CTT MINUS 65-85 DEG CEL)

**(B) DEPRESSION OVER NORTHWEST RAJASTHAN WEAKENED INTO A WELL MARKED LOW PRESSURE AREA OVER THE SAME REGION**

THE DEPRESSION OVER NORTHWEST RAJASTHAN MOVED SLOWLY NORTH-NORTHWESTWARDS AND WEAKENED INTO A WELL MARKED LOW PRESSURE AREA OVER THE SAME REGION AT 0000 UTC OF TODAY, THE 16TH JULY, 2025.

IT IS LIKELY TO CONTINUE TO MOVE SLOWLY NORTH-NORTHWESTWARDS ACROSS NORTHWEST RAJASTHAN AND WEAKEN INTO A LOW PRESSURE AREA DURING NEXT 12 HOURS.

AS PER INSAT 3DR IMAGERY, AT 0000 UTC OF 16<sup>TH</sup> JULY 2025 SCATTERED TO BROKEN LOW/MEDIUM CLOUDS WITH EMBEDDED INTENSE TO VERY INTENSE CONVECTION OVER NORTH PAKISTAN (MINIMUM CTT MINUS 70-90 DEG CEL) AND MODERATE TO INTENSE CONVECTION OVER PUNJAB NORTHWEST RAJASTHAN (MINIMUM CTT MINUS 50-70 DEG CEL).

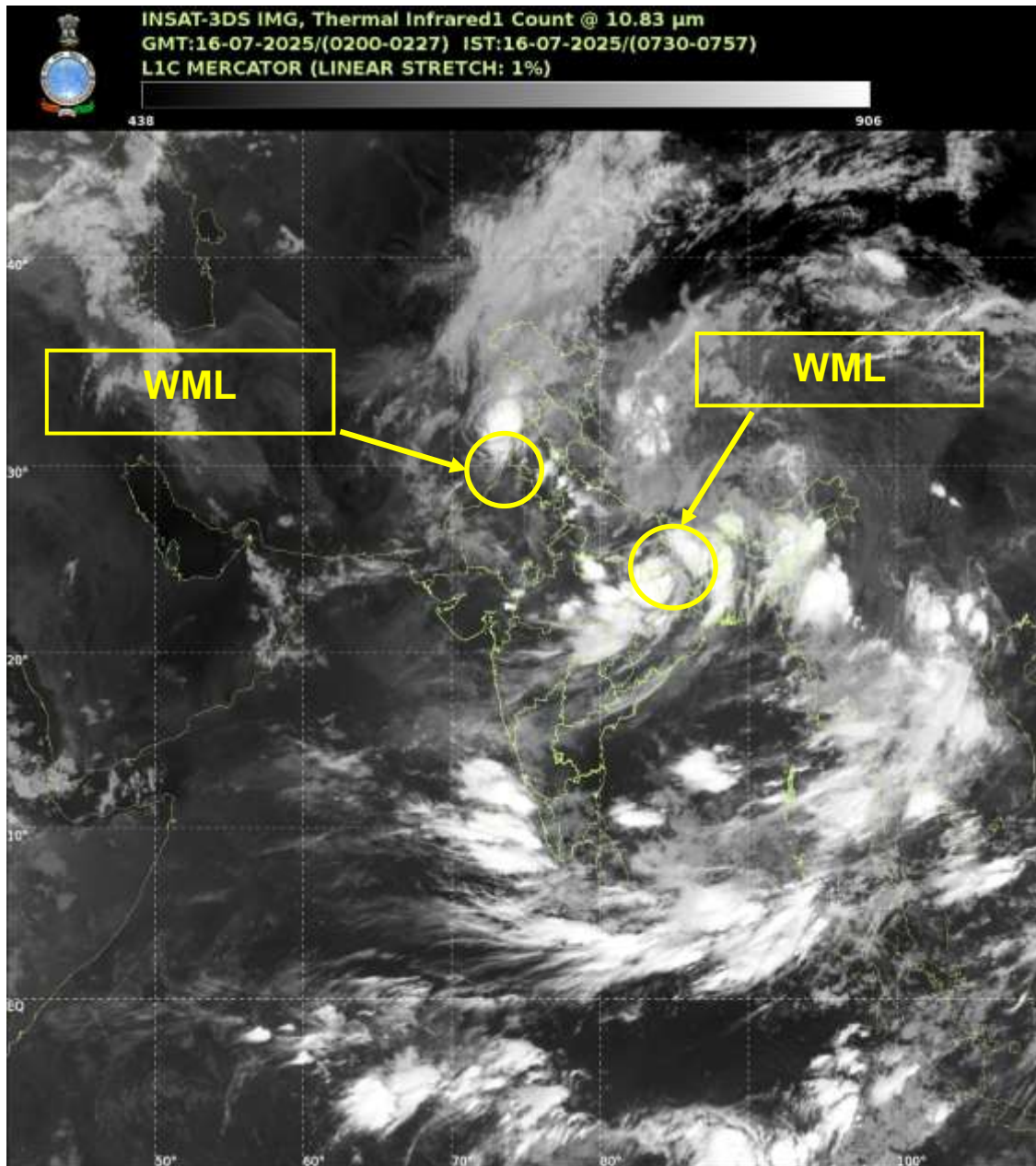
**WARNINGS:**

**WIND WARNING:**

- SQUALLY WIND SPEED REACHING 30-40 KMPH GUSTING TO 50 KMPH IS LIKELY TO PREVAIL OVER NORTH RAJASTHAN AND ADJOINING HARYANA & PUNJAB FOR NEXT 12 HOURS, AND DECREASE THEREAFTER.
- SQUALLY WIND SPEED REACHING 30-40 KMPH GUSTING TO 50 KMPH IS LIKELY OVER BIHAR, JHARKHAND AND ADJOINING EAST UTTAR PRADESH DURING NEXT 24 HOURS

THIS IS THE LAST SPECIAL TROPICAL WEATHER OUTLOOK PERTAINING TO THE ABOVE SYSTEMS. HOWEVER, REGULAR TROPICAL WEATHER OUTLOOK WILL CONTINUE.

**(D.R Pattanaik)**  
**Head RSMC & IMD, New Delhi**



WML – Well Marked Low Pressure Area



## OBSERVED TRACK OF DEPRESSION OVER CENTRAL PARTS OF NORTH RAJASTHAN AT DURING 15—16 JULY 2025



DATE/TIME IN UTC  
IST=UTC + 0530  
1KT=1.85 KMPH  
L: LOW PRESSURE AREA  
WML: WELL MARKED LOW PRESSURE AREA  
D: DEPRESSION (17-27 KT)  
DD: DEEP DEPRESSION (28-33 KT)  
CS: CYCLONIC STORM (34-47 KT)  
SCS: SEVERE CYCLONIC STORM (48-63KT)  
VSCS: VERY SEVERE CYCLONIC STORM (64-89 KT)  
ESCS: EXTREMELY SEVERE CYCLONIC STORM (90-119 KT)  
SuCS: SUPER CYCLONIC STORM (≥ 120 KT)

● LESS THAN 34 KT  
● 34-47 KT  
● ≥ 48 KT  
— OBSERVED TRACK  
— FORECAST TRACK  
▲ CONE OF UNCERTAINTY



## Fishermen Warning Graphics

